

PENNSTATE



**International**

2015

# Penn State Facts



Create your MyPennState profile at [admissions.psu.edu](https://admissions.psu.edu)



A *Wall Street Journal* survey of corporate recruiters **RANKED PENN STATE FIRST** among 100 colleges for its ability to help students prepare for the job market.

## Why Penn State?

There are literally hundreds of reasons to choose Penn State. The University offers more than 160 baccalaureate majors ... more than 1,200 student clubs and organizations ... a system of 20 undergraduate campuses across Pennsylvania that enroll first-year students, 18 of which are recommended for international students ... more than 150 years of tradition. Among so many reasons you might consider Penn State, one stands out: high-quality academics.

Penn State faculty are recognized nationally and internationally for achievements in teaching and research. Academic programs in many areas are also highly ranked, from engineering to education, business to communications, agriculture to French.

No matter what you choose to study, you can be sure that Penn State will offer you an incredible academic and student experience!

## Student Demographics (fall 2013)

The student body represents **50** states and **137** countries.

### Residency

Pennsylvania residents **71%**

### Gender

Men **54%**

Women **46%**

### International Student Population

Undergraduate and Graduate **7,403**

### Women

**46%** of baccalaureate students

**47%** of graduate degree students

**47%** of medical/law students

### Out-of-state first-year students

University Park **37%**

University-wide **28%**

### Students of color

**19%** of total enrollment

## Enrollment (fall 2013)

**98,907** students University-wide

*(includes World Campus, The Dickinson School of Law, Great Valley School of Graduate and Professional Studies, Penn State College of Medicine at the Milton S. Hershey Medical Center, and Pennsylvania College of Technology)*

## Academic Programs

More than **160** baccalaureate degree majors.

## Class Size

At University Park, **85** percent of first-year classes have fifty or fewer students. Only twelve courses have more than 400 students.

At other Penn State campuses, classes generally have **twenty or fewer students**.

## Study Abroad

More than **2,400** undergraduates study abroad every year in more than **54** countries in Africa, Asia, Europe, Latin America, and the Middle East, as well as Australia and New Zealand.

## Libraries

The Association of Research Libraries ranks the Penn State University Libraries **8th** nationally among public research libraries.

The Libraries contain more than **5.3 million** volumes and more than **88,000** current serial titles.

## Faculty (fall 2013)

Total full-time faculty University-wide: **4,809**

Faculty Fulbright Scholars: **11**

Student/faculty ratio: **17:1**

*(excludes The Dickinson School of Law, Penn State College of Medicine at the Milton S. Hershey Medical Center, and Pennsylvania College of Technology)*



## Admission (summer/fall 2013)

Total first-year bachelor's degree applications: **57,217**  
International: **10,773**

Total first-year bachelor's degree students University-wide: **16,367**  
International: **1,301**

Total first-year bachelor's degree students at University Park: **8,287**  
International: **795**

Total transfer bachelor's degree applications from other universities: **8,060**  
International: **1,288**

Total entering transfer bachelor's degree students from other universities University-wide: **3,349**  
International: **243**

Total entering transfer bachelor's degree students from other universities at University Park: **508**  
International: **161**

## Applying to Penn State

All students are encouraged to apply by November 30. Some programs and campuses fill quickly, so it is always to the student's benefit to apply early. For most majors, decisions for international students will be made in April

Your application to Penn State allows you to be evaluated for any of our campuses and programs. The University Park campus is the most competitive campus for admission to all programs.

Apply online at [admissions.psu.edu](http://admissions.psu.edu). Also visit the website for a list of required academic credentials by country.

## Unique Offerings

- > Schreyer Honors College  
[shc.psu.edu](http://shc.psu.edu)  
814-863-2635
- > International Study  
[global.psu.edu](http://global.psu.edu)  
814-865-7681
- > Internships  
[studentaffairs.psu.edu/career](http://studentaffairs.psu.edu/career)
- > Undergraduate Research  
[undergradresearch.psu.edu](http://undergradresearch.psu.edu)
- > Extracurriculars  
[clubs.psu.edu](http://clubs.psu.edu)

## Admissions Timeline

Summer/fall application priority date: **February 1**    Spring application priority date: **October 1**    Summer/fall acceptance notification date: **May 1**

## Admissions Checklist

Several components make up a complete application. When you apply to Penn State you will need to send the following:

- Your application (*web preferred*)
- \$65 nonrefundable application fee
- An official copy of your secondary school records
- An official copy of your postsecondary school records (*if applicable*)
- A certified, line-by-line English translation of original school records (*if applicable*)
- AP, IB, or IGCSE scores (*if applicable*)
- SAT/ACT Beginning with applicants for summer 2015, all first-year applicants are required to submit SAT scores or ACT scores, including the writing section.
- English proficiency
 

All international students whose native language is not English must provide proof of language proficiency in any one of the following ways:

  - A minimum TOEFL score of **80** on the Internet-based TOEFL or **550** on the paper exam
  - A minimum IELTS score of **6.5** on the academic test
  - SAT score of **530** or higher on the critical reading section
  - IGCSE score of **A, B, or C** on the English language exam
  - IB score of **5** or higher on the English exam
  - ACT score of **24** or higher on the English section
  - Certification through Penn State's Intensive English Communication Program

## Estimating Your Eligibility

The tables shown below are based on the middle 50 percent of students from U.S.-style schools offered admission for the fall 2014 semester. They are intended to give you a general idea of how likely you are to be offered admission to Penn State and at which campuses.

Please keep in mind that these figures are not requirements and do not guarantee admission. The tables show the middle 50 percent; thus, in each range listed, 25 percent of students offered admission fell below the range shown and 25 percent fell above the range. Having one factor high in the middle range may help to balance the other factor if it falls low in the middle range.

### High School Grade-Point Average\*

MIDDLE 50% RANGE

Penn State University Park 3.55–3.97

All other campuses 3.00–3.50

### Combined SAT

MIDDLE 50% RANGE

Penn State University Park 1750–2000

All other campuses 1460–1690

### Composite ACT\*\*

MIDDLE 50% RANGE

Penn State University Park 26–30

All other campuses 21–25

### Combined English/Writing ACT

MIDDLE 50% RANGE

Penn State University Park 25–30

All other campuses 19–24

\*High school grade-point average is based on a 4.0 scale.

\*\*Reading and math scores only; students taking the ACT are required to complete and submit the writing component.



Penn State ranks 10th in the nation in the number of **INTERNATIONAL STUDENTS** enrolled, according to the Institute of International Education.

### Financial Guarantee Requirements

Mandatory medical insurance is estimated at approximately \$3,100 for one year; other personal living expenses are estimated at \$19,300. The total of these estimated amounts must be added to the costs paid to the University for tuition and fees, room and meals, and personal costs for books and supplies. Together, they represent the cost of attendance. A statement from a bank, financial institution, or scholarship agency must be provided to document that the applicant has available funds to cover the cost of attending Penn State. For more information, check [global.psu.edu/financial-requirements](http://global.psu.edu/financial-requirements)

## Tuition and Financial Aid

### Financial Aid for U.S. Citizens and Permanent Residents

U.S. citizens and permanent residents must fill out the Free Application for Federal Student Aid (FAFSA) to be considered for financial assistance. This is the only form Penn State requires for student aid. The FAFSA is available online at [fafsa.ed.gov](http://fafsa.ed.gov) on January 1. For maximum consideration, complete the FAFSA by March 1. More information is available at [studentaid.psu.edu](http://studentaid.psu.edu) or 814-865-6301.

### Financial Aid for International Students

Currently, financial aid is not available to students who are not U.S. citizens or permanent residents. Therefore, international students must document that they have sufficient funds to cover both the direct costs to the University and living expenses. For the most current information on costs, please visit [global.psu.edu](http://global.psu.edu) and, under “Students,” select *Financial Information* from the menu under “International Students Coming to Penn State.”

[tuition.psu.edu](http://tuition.psu.edu)

### Tuition and Related Costs (2013–14) for First-Year International Students\*

#### PENN STATE UNIVERSITY PARK

TUITION AND FEES \$29,556

PENN STATE ABINGTON	PENN STATE HARRISBURG
PENN STATE ALTOONA	PENN STATE HAZLETON
PENN STATE BEAVER	PENN STATE MONT ALTO
PENN STATE BERKS	PENN STATE NEW KENSINGTON
PENN STATE BRANDYWINE	PENN STATE SCHUYLKILL
PENN STATE DUBOIS	PENN STATE WILKES-BARRE
PENN STATE ERIE	PENN STATE WORTHINGTON
PENN STATE FAYETTE	SCRANTON
PENN STATE GREATER ALLEGHENY	PENN STATE YORK

TUITION AND FEES \$20,018–21,362

\*Additional estimated costs at ALL CAMPUSES

Rooms and Meals	\$10,116
Books and Supplies	\$1,696
Other Living Expenses	\$9,768
Mandatory Medical Insurance‡	\$3,100
International Fee‡	\$1,000
<b>TOTAL</b>	<b>\$25,680</b>

\*Costs for transfer students (third year and beyond) may be higher.

‡ Only for international students



## Penn State Campuses with International Student Support

Penn State offers more than 160 majors, almost all of which can be completed at Penn State University Park. The University's other campuses offer the first two years of most of these majors, after which students can transition to University Park to complete their degree. We call this the 2+2 plan. Each campus also has its own array of academic offerings.

There are other things to consider as well: In what part of Pennsylvania would you like to live and study? What size campus do you find most comfortable? Do you want to live on or off campus? What extracurricular activities interest you? The best way to find out if a campus is right for you is to visit our website, [admissions.psu.edu](http://admissions.psu.edu). The campuses listed below offer support services tailored to meet the needs of international students.



Campus website	Total enrollment	Setting	On-campus housing
<a href="http://psu.edu">Penn State University Park psu.edu</a>	46,184	Rural	Yes
<a href="http://abington.psu.edu">Penn State Abington abington.psu.edu</a>	3,694	Suburban	No
<a href="http://altoona.psu.edu">Penn State Altoona altoona.psu.edu</a>	3,861	Suburban	Yes
<a href="http://beaver.psu.edu">Penn State Beaver beaver.psu.edu</a>	703	Suburban	Yes
<a href="http://berks.psu.edu">Penn State Berks berks.psu.edu</a>	2,732	Suburban	Yes
<a href="http://brandywine.psu.edu">Penn State Brandywine brandywine.psu.edu</a>	1,492	Suburban	No
<a href="http://dubois.psu.edu">Penn State DuBois dubois.psu.edu</a>	704	Rural	No
<a href="http://behrend.psu.edu">Penn State Erie, The Behrend College behrend.psu.edu</a>	4,057	Suburban	Yes
<a href="http://fayette.psu.edu">Penn State Fayette, The Eberly Campus fayette.psu.edu</a>	846	Rural	No
<a href="http://greaterallegheny.psu.edu">Penn State Greater Allegheny greaterallegheny.psu.edu</a>	623	Suburban	Yes
<a href="http://hbg.psu.edu">Penn State Harrisburg hbg.psu.edu</a>	4,441	Suburban	Yes
<a href="http://hazleton.psu.edu">Penn State Hazleton hazleton.psu.edu</a>	951	Suburban	Yes
<a href="http://montalto.psu.edu">Penn State Mont Alto montalto.psu.edu</a>	1,023	Rural	Yes
<a href="http://nk.psu.edu">Penn State New Kensington nk.psu.edu</a>	680	Suburban	No
<a href="http://schuylkill.psu.edu">Penn State Schuylkill schuylkill.psu.edu</a>	837	Suburban	Yes
<a href="http://wilkesbarre.psu.edu">Penn State Wilkes-Barre wilkesbarre.psu.edu</a>	613	Rural	No
<a href="http://worthingtonscranton.psu.edu">Penn State Worthington Scranton worthingtonscranton.psu.edu</a>	1,178	Suburban	No
<a href="http://york.psu.edu">Penn State York york.psu.edu</a>	1,177	Suburban	No

## Academic Colleges

### College of Agricultural Sciences

[agsci.psu.edu](http://agsci.psu.edu)  
1,918 undergraduate students  
449 graduate students

### College of Arts and Architecture

[artsandarchitecture.psu.edu](http://artsandarchitecture.psu.edu)  
1,228 undergraduate students  
248 graduate students

### Smeal College of Business

[smeal.psu.edu](http://smeal.psu.edu)  
5,405 undergraduate students  
301 graduate students

### College of Communications

[comm.psu.edu](http://comm.psu.edu)  
2,695 undergraduate students  
62 graduate students

### College of Earth and Mineral Sciences

[ems.psu.edu](http://ems.psu.edu)  
1,958 undergraduate students  
499 graduate students

### College of Education

[ed.psu.edu](http://ed.psu.edu)  
1,488 undergraduate students  
767 graduate students

### College of Engineering

[www.engr.psu.edu](http://www.engr.psu.edu)  
7,217 undergraduate students  
1,365 graduate students

### College of Health and Human Development

[www.hhdev.psu.edu](http://www.hhdev.psu.edu)  
4,588 undergraduate students  
376 graduate students

### College of Information Sciences and Technology (IST)

[ist.psu.edu](http://ist.psu.edu)  
834 undergraduate students  
116 graduate students

### College of the Liberal Arts

[www.la.psu.edu](http://www.la.psu.edu)  
5,163 undergraduate students  
788 graduate students

### College of Nursing

[nursing.psu.edu](http://nursing.psu.edu)  
497 undergraduate students  
105 graduate students

### Eberly College of Science

[science.psu.edu](http://science.psu.edu)  
3,197 undergraduate students  
777 graduate students

### Division of Undergraduate Studies

[dus.psu.edu](http://dus.psu.edu)  
3,244 undergraduate students

# Majors

Penn State offers more than **160** baccalaureate degree majors. This list of Penn State majors has been organized by familiar areas of study to help you locate all the majors in your area of interest. Most of these programs can be started at any Penn State campus and finished at University Park.



## Services for International Students

[global.psu.edu](http://global.psu.edu)  
814-865-7681

- > Visa matters
- > Pre-arrival and initial document services
- > Orientation
- > Advising
- > Intensive English Communication Program  
[iecp.psu.edu](http://iecp.psu.edu)  
814-865-7550

## Baccalaureate (Four-Year) Degree Programs

*Note: Some majors are listed under more than one subject area.*

### Agriculture and Natural Resources

- Agribusiness Management
- Agricultural and Extension Education
- Agricultural Science
- Animal Science
- Biological Engineering
- BioRenewable Systems
- Community, Environment, and Development
- Earth Science and Policy
- Earth Sciences
- Environmental Resource Management
- Environmental Studies
- Environmental Systems Engineering
- Food Science
- Forest Ecosystem Management
- Immunology and Infectious Disease
- Landscape Contracting
- Plant Sciences
- Toxicology
- Turfgrass Science
- Veterinary and Biomedical Sciences
- Wildlife and Fisheries Science

### Architecture and Environmental Design

- Architectural Engineering
- Architecture<sup>+</sup>
- Landscape Architecture<sup>+</sup>
- Landscape Contracting

### Arts: Visual and Performing

- Art
- Art, B.F.A.
- Art Education
- Art History
- Arts Administration
- Graphic Design
- Integrative Arts
- Interdisciplinary Digital Studio
- Music
- Music Education
- Musical Arts
- Musical Theatre
- Theatre, B.A.
- Theatre, B.F.A.
- Visual Art Studies

### Biological (Life) Sciences

- Biochemistry and Molecular Biology
- Biological Anthropology
- Biological Engineering
- Biology
- Biomedical Engineering
- Biotechnology
- Food Science
- Forensic Science
- Immunology and Infectious Disease
- Microbiology
- Nutritional Sciences
- Plant Sciences
- Premedical-Medical, Accelerated<sup>+</sup>
- Premedicine
- Science
- Toxicology
- Veterinary and Biomedical Sciences

### Business

- Accounting
- Agribusiness Management
- Arts Administration
- Business
- Business Economics
- Economics
- Energy and Sustainability Policy
- Energy Business and Finance
- Finance
- Golf Management
- Health Policy and Administration
- Hospitality Management
- Information Systems
- Interdisciplinary Business with Engineering Studies
- International Business
- Labor Studies and Employment Relations
- Management
- Management Information Systems
- Marketing
- Project and Supply Chain Management
- Recreation, Park, and Tourism Management
- Risk Management
- Supply Chain and Information Systems
- Telecommunications

### Communications

- Advertising/Public Relations
- Communication
- Communication Arts and Sciences
- Communications
- Corporate Communication
- Film-Video
- Journalism

- Media Studies
- Telecommunications
- Writing, Creative
- Writing, Professional

### Computer and Information Systems

- Computer Engineering
- Computer Science
- Information Sciences and Technology
- Information Systems
- Management Information Systems
- Security and Risk Analysis
- Software Engineering

### Education

- Agricultural and Extension Education
- Art Education
- Childhood and Early Adolescent Education
- Education and Public Policy
- Elementary Education
- Music Education
- Rehabilitation and Human Services
- Secondary Education (multiple options)
- Special Education
- Workforce Education and Development
- World Languages (K-12) Education (multiple options)

### Engineering

- Aerospace Engineering
- Architectural Engineering
- Biological Engineering
- Biomedical Engineering
- Chemical Engineering
- Civil Engineering
- Computer Engineering
- Computer Science
- Electrical Engineering
- Energy Engineering
- Engineering Science
- Environmental Systems Engineering
- General Engineering
- Industrial Engineering
- Interdisciplinary Business with Engineering Studies
- Materials Science and Engineering
- Mechanical Engineering
- Mining Engineering
- Nuclear Engineering
- Petroleum and Natural Gas Engineering
- Rail Transportation Engineering
- Software Engineering
- Surveying Engineering

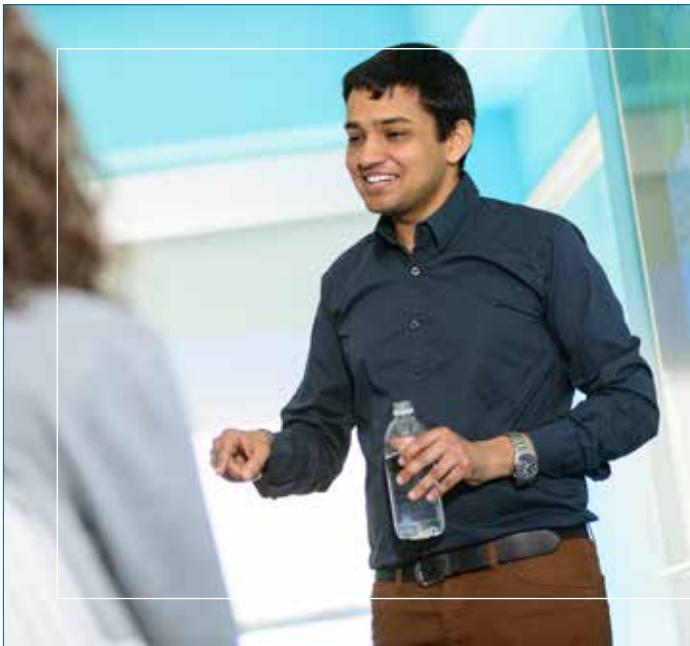
### Engineering Technologies

- Electrical and Computer Engineering Technology
- Electrical Engineering Technology
- Electro-Mechanical Engineering Technology
- Mechanical Engineering Technology
- Plastics Engineering Technology
- Rail Transportation Engineering
- Structural Design and Construction Engineering Technology

### Health Professions, Allied Health Services, and Recreational Services

- Athletic Training
- Biobehavioral Health
- Biotechnology

**\* Your application and complete credentials must be received by November 30.**



“If I can save one child from dying, one person, that’s enough.”

**Advait Kumar**, a Penn State electrical engineering graduate from Kanpur, India, founded Swajal, a company that makes clean water available in poverty-stricken areas of India. “Twenty-one percent of communicable diseases in India are water related,” Advait says. “This is curable.”

When Advait arrived at University Park campus to begin his undergraduate degree, he held firm to the belief that clean water is a basic right. His mother, a professor in Kanpur, insisted he focus on developing his water purification project, telling him: “You must do this.”

He praises Penn State’s community for encouraging him: “To solve such big issues, you need many perspectives.”

Communication Sciences and Disorders  
 Golf Management  
 Health Policy and Administration  
 Hospitality Management  
 Kinesiology  
 Nursing+  
 Nursing (for licensed RNs only)  
 Nursing (Second Degree option)  
 Nutritional Sciences  
 Physical Therapy, Accelerated, Bachelor of Science/Doctorate  
 Premedical-Medical, Accelerated+  
 Premedicine  
 Recreation, Park, and Tourism Management  
 Rehabilitation and Human Services

**Humanities and Language**

Asian Studies  
 Chinese  
 Classics and Ancient Mediterranean Studies  
 Communication Arts and Sciences  
 Comparative Literature  
 English  
 French and Francophone Studies  
 German

History  
 Italian  
 Japanese  
 Law and Society  
 Medieval Studies  
 Philosophy  
 Russian  
 Spanish  
 Writing, Creative  
 Writing, Professional

**Interdisciplinary Studies**

African American Studies  
 African Studies  
 American Studies  
 Asian Studies  
 General Arts and Sciences  
 Global Studies  
 Jewish Studies  
 Latin American Studies  
 Letters, Arts, and Sciences  
 Organizational Leadership  
 Women’s Studies

**Physical Sciences and Mathematics**

Astronomy and Astrophysics  
 Chemistry  
 Earth Sciences

Energy and Sustainability Policy  
 Energy Business and Finance  
 Geobiology  
 Geography  
 Geosciences  
 Mathematical Sciences  
 Mathematics  
 Meteorology  
 Physics  
 Planetary Science and Astronomy  
 Science  
 Science B.S./M.B.A.  
 Statistics

**Social Sciences**

Administration of Justice  
 Anthropology  
 Applied Behavioral Science  
 Applied Psychology  
 Archaeological Science  
 Biological Anthropology  
 Criminal Justice  
 Criminology  
 Earth Science and Policy  
 Economics  
 Energy and Sustainability Policy  
 Geography  
 Human Development and Family Studies  
 International Politics  
 Labor Studies and Employment Relations  
 Law and Society  
 Political Science  
 Psychological and Social Sciences  
 Psychology  
 Public Policy  
 Sociology

**Division of Undergraduate Studies**

An enrollment and advising unit for undecided students who prefer to explore several academic programs before choosing a major.

**Associate (Two-Year) Degree Programs**

Agricultural Business  
 Biomedical Engineering Technology  
 Building Engineering Technology  
 Business Administration  
 Business, General  
 Criminal Justice  
 Electrical Engineering Technology  
 Forest Technology  
 Hotel, Restaurant, and Institutional Management  
 Human Development and Family Studies  
 Information Sciences and Technology  
 Letters, Arts, and Sciences  
 Materials Engineering Technology  
 Mechanical Engineering Technology  
 Medical Laboratory Technology  
 Mining Technology  
 Occupational Therapy  
 Physical Therapist Assistant  
 Radiological Sciences  
 Science  
 Surveying Engineering Technology  
 Turfgrass Science and Management  
 Wildlife Technology  
 Workforce Education

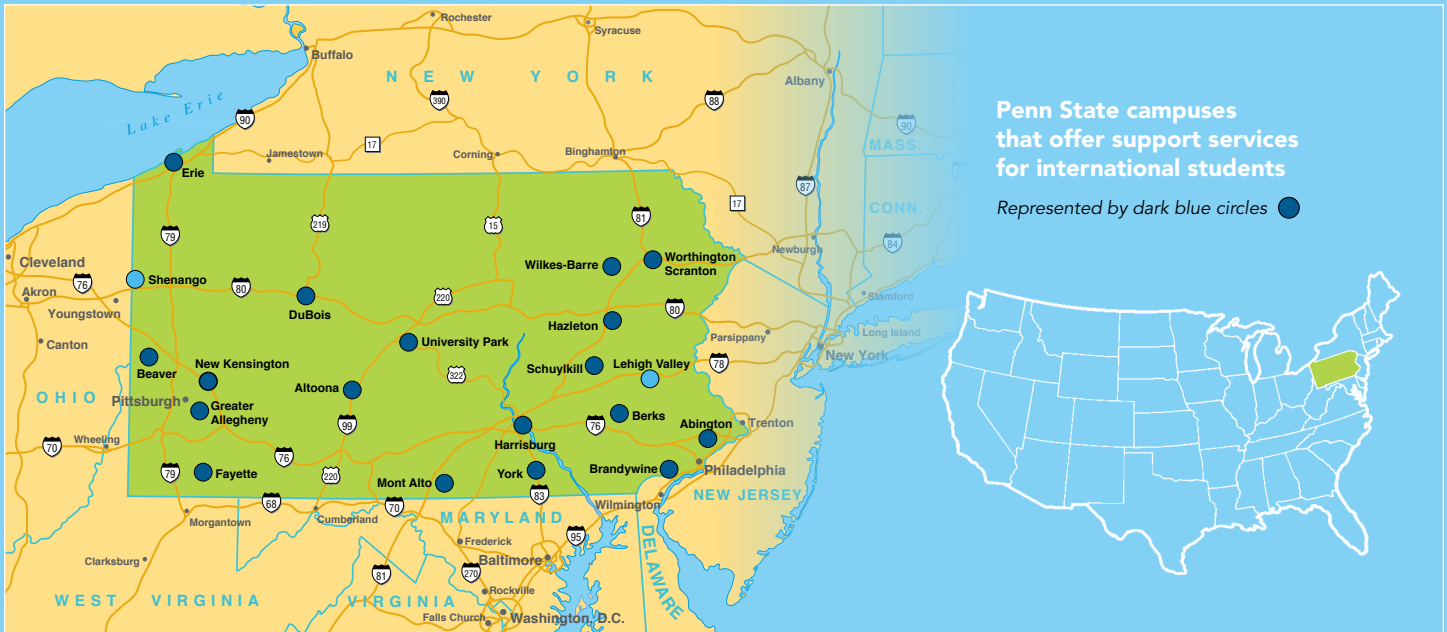


**Alumni**

There are more than **616,000** living Penn State alumni. The Penn State Alumni Association is the largest of its kind, with more than **170,000** members. Penn State has **forty-one** alumni chapters outside the United States.

## For more information:

Undergraduate Admissions Office  
The Pennsylvania State University  
201 Shields Building  
University Park, PA 16802-1294  
[admissions.psu.edu](http://admissions.psu.edu)



Check out our blog, including specific information for international students, at [sites.psu.edu/weadmit](http://sites.psu.edu/weadmit)

The University is committed to equal access to programs, facilities, admission, and employment for all persons. It is the policy of the University to maintain an environment free of harassment and free of discrimination against any person because of age, race, color, ancestry, national origin, religion, creed, service in the uniformed services (as defined in state and federal law), veteran status, sex, sexual orientation, marital or family status, pregnancy, pregnancy-related conditions, physical or mental disability, gender, perceived gender, gender identity, genetic information, or political ideas. Discriminatory conduct and harassment, as well as sexual misconduct and relationship violence, violates the dignity of individuals, impedes the realization of the University's educational mission, and will not be tolerated. Direct all inquiries regarding the nondiscrimination policy to Dr. Kenneth Lehrman III, Vice Provost for Affirmative Action, Affirmative Action Office, The Pennsylvania State University, 328 Boucke Building, University Park, PA 16802-5901; Email: [kfl2@psu.edu](mailto:kfl2@psu.edu); Tel 814-863-0471. U.Ed. UAO 14-242

Penn State encourages qualified persons with disabilities to participate in its programs and activities. If you anticipate needing any type of accommodation or have questions about the physical access provided, please contact the Undergraduate Admissions Office in advance of your participation or visit.

THIS PUBLICATION IS AVAILABLE IN ALTERNATIVE MEDIA ON REQUEST.

